

BEGINNERS' LESSONS

Welcome

Teacher: Douglas Russell

Telephone: 480 2294 or 021 235 2220

Email: *DouglasKeithRussell@gmail.com*

Prepared by Douglas Russell for Auckland Bridge Club



Lesson Nine

Takeout Doubles



Reasons for Overcalling

- To get into the bidding ... make it hard for the opposition
- Express a genuine desire to play in a suit
- Suggest a lead for partner



Rules to Overcall a suit

- MUST be a 5+ card suit with a good suit – 2+ honours in suit
- Point count should be close to opening values ... a little bit less is OK though



Teaching
Board 6

D

N Robot

Remove

WEST NORTH EAST wasgij

1 ♣

1 ♥

Opening Hand with GOOD 5-card suit
(at least two honours in the suit)

W Robot

Remove

E Robot

Remove



Pass

Dbl

1 2 3 4 5 6 7

Rules to Overcall in NoTrumps

- Need BETTER points than an opening 1NT
 - 16 – 18 points
- MUST have a cover in the opposition's suit



Teaching
Board 6

D

N

Robot

Remove

WEST

NORTH

EAST

wasgij

1♦

1NT

18 points, balanced hand with a
diamond hold

W

Robot

Remove

E

Robot

Remove

KQJ K98 A963 A J 7

♠ ♠ ♠ ♥ ♥ ♥ ♣ ♣ ♣ ♣ ♦ ♦ ♦

S wasgij

Pass

Dbf

1

2

3

4

5

6

7



WHAT HAPPENS when your hand doesn't meet these criteria?

- No 5-card suit
- Can't bid NT because you have no hold in the opposition's suit
- Can't bid NT because your hand is not strong enough



Teaching
Board 2

D

N

Robot

Remove

WEST

NORTH

EAST

wasgij

1♣

X

13 points, no 5-card suit

... can't bid a suit

... can't bid 1NT ... not strong enough

W

Robot

Remove

E

Robot

Remove



S



wasgij

Pass

dbl

1

2

3

4

5

6

7

Takeout Double shows the following:

- At least 3 cards in each of the **unbid** suits
- Shortage in the opponent's suit
- Opening hand (12+ points)
- X asks partner to choose the best contract

Do not DOUBLE with length in opponent's suit



Choices when Competing

- FIRST CHOICE ... Overcall a major
- SECOND CHOICE ... Overcall 1NT
- THIRD CHOICE ... Use the takeout X
- FOURTH CHOICE... Overcall a minor

**REMEMBER MAJORS ARE THE MOST
IMPORTANT**



Teaching
Board 2

D

N

Robot

Remove

WEST

NORTH

EAST

wasgij

1♣

X

12+ points

3 cards in each of the unbid suits

Shortage in opposition suit

E

Robot

Remove



S

wasgij

Pass

dbl

1

2

3

4

5

6

7

D

Teaching
Board 1

N

Robot

Remove

WEST

NORTH

EAST

wasgij

Pass

1♦

X

12+ points

3+ cards in each of the unbid suits

Shortage in opposition suit

W

Robot

Remove

E

Robot

Remove



Teaching
Board 2

D

N

Robot

Remove

WEST

NORTH

EAST

wasgij

1 ♣

X

12+ points

3 cards in each of the unbid suits

Shortage in opposition suit

W

Robot

Remove

E

Robot

Remove



S

wasgij

Teaching
Board 2

D

N

Robot

Remove

WEST

NORTH

EAST

wasgij

1 ♦

PASS

15 points ... BUT only 1 club ... Not
balanced ... therefore have to PASS

W

Robot

Remove

E

Robot

Remove



S

wasgij

D

Teaching
Board 1

N

Robot

Remove

WEST

NORTH

EAST

wasgij

Pass

1♣

PASS

14 points ... BUT only 2 hearts ...
balanced hand but cannot bid 1NT
because there are not enough points
... therefore have to PASS

E

Robot

Remove

J 10 5 4 J 4 A Q 8 A Q 10 8

♠ ♠ ♠ ♠ ♥ ♥ ♣ ♣ ♣ ♦ ♦ ♦ ♦

S



wasgij

Do NOT make a takeout double if:

You have length in the opponent's suit - **PASS**

You have points but cannot support any bid partner makes - **PASS**

You have a balanced 16-18 points with a good stop in their suit – **BID 1 NT**

You have a good suit of your own to show –
OVERCALL YOUR SUIT



Response to a Takeout Double

- If your RHO passes ... YOU HAVE TO BID
 - ... even if you have no points ...
 - ... even at the 2-level if necessary
 - REMEMBER partner has promised that he can handle any other suit

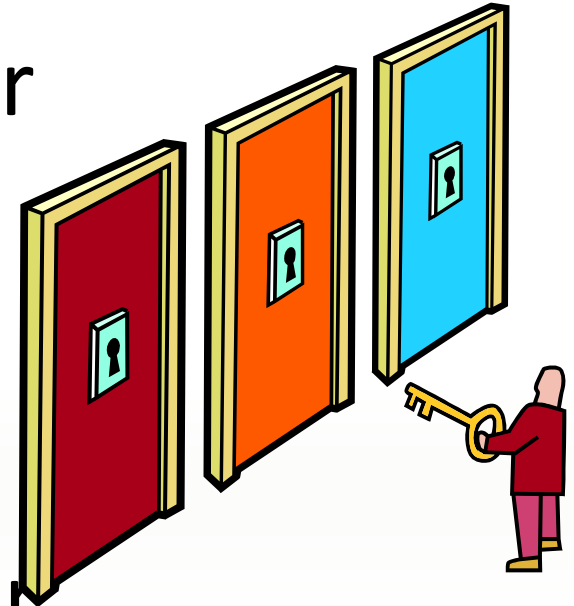


You do not HAVE to bid after an opponent calls



Response to a Takeout Double

- FIRST CHOICE
 - Give preference to a major
- SECOND CHOICE
 - Bid 1NT
- THIRD CHOICE
 - Give preference to a minor



You do not have to bid after an opponent calls



Response to a Takeout Double

GAME	13+	Jump to GAME Suit (5+), or 3NT
INVITATIONAL	10-12	Jump in a suit (4+) Bid 2NT (with a stop)
MINIMUM	0-9	Bid your own suit (4+) Or 1NT with 6-9 points



Response to a Takeout Double

- If the opponent's bid BEFORE you are forced to bid, you can now PASS
- Therefore a bid from you now shows 8+ points ... it is a CONSTRUCTIVE bid



You do not have to bid after an opponent calls



Teaching Board 8

N

Robot

Remove

W

Robot

Remove

WEST	NORTH	EAST	wasgij
1♣	Dbf	Pass	1♥
Bid your lowest 4 -card major <10 points so bid at the lowest level possible			

E

Robot

Remove

A♠

Q♠

8♠

3♠

9♥

7♥

6♥

5♥

Q♣

6♣

9♦

5♦

2♦

S

wasgij



D

Teaching Board 8

N

Robot

Remove

W

Robot

Remove

WEST	NORTH	EAST	wasgij
1♠	Dbl	Pass	1NT
6 – 9 points, no 4-card major, balanced hand with a Spade hold ... therefore bid 1NT			

E

Robot

Remove

A

10

2

7

6

Q

J

10

8

9

7

3

2

♠

♠

♠

♥

♥

♣

♣

♣

♣

♦

♦

♦

♦

♦

S

wasgij



Teaching Board 8

N

Robot

Remove

W

Robot

Remove

WEST	NORTH	EAST	wasgij
1♣	Dbl	1♥	PASS

East has bid ... you don't have to bid now

<8 points, therefore PASS

E

Robot

Remove

10

7

2

7

6

Q

J

10

8

9

7

3

2

♠

♠

♠

♥

♥

♣

♣

♣

♣

♦

♦

♦

♦

♦

S

♠

wasgij



D Teaching Board 8

N Robot Remove

W Robot Remove

WEST	NORTH	EAST	wasgij
1♦	Dbl	Pass	1♥

Bid your major at the lowest level

E Robot Remove

8♠

3♠

2♠

Q♥

10♥

7♥

3♥

2♥

J♣

8♣

9♦

5♦

4♦

S ♠ wasgij



D

Teaching Board 8

N

Robot

Remove

W

Robot

Remove

WEST	NORTH	EAST	wasgij
1 ♠	Dbl	Pass	2 ♥
<p>Bid your major at the lowest level</p>			

E

Robot

Remove

8

3

2

Q

10

7

3

2

J

8

9

5

4

♠

♠

♠

♥

♥

♥

♥

♥

♣

♣

♦

♦

♦

♦

S

wasgij



Teaching Board 8

N

Robot

Remove

W

Robot

Remove

WEST	NORTH	EAST	wasgij
1♦	Dbl	1♠	PASS
You don't have to bid			

E

Robot

Remove

8♠

3♠

2♠

Q♥

10♥

7♥

3♥

2♥

J♣

8♣

9♦

5♦

4♦

♦

S

wasgij



Illustrative Hands Using BBO

Link to Bridge
Base Online
Website



BEGINNERS' LESSONS

Welcome

Teacher: Douglas Russell

Telephone: 480 2294 or 021 235 2220

Email: *DouglasKeithRussell@gmail.com*

Prepared by Douglas Russell for Auckland Bridge Club

