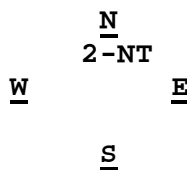


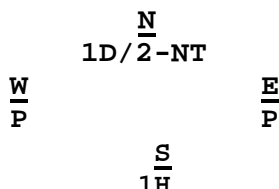
## The Varied Meanings of “2-No-Trump”Bids

Just as there are numerous “1-NT” bids with significantly different meaning dependent upon the actual sequence of the bidding process in which they become a part, the position at the bridge table of the Players who are using them, and the possible presence of any conventions which might be employed by the individual Partnerships involved; the same situation exists with “2-NT” bids, as well. **Note:** Some Conventional bids like “Jordan”, “Jacoby 2-NT”, and others are herein omitted.

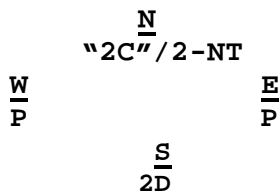
- A. An Opening Bid of 2-NT in Any Position:** = 20-21 HCP’s in American Standard, balanced with no singletons, or voids, and not more than one doubleton. Conventional wisdom is that three of the 4-suits need be stopped. (Note: Some Partnerships use 20-22 or 21-22 HCP ranges, but this is purely by Partnership agreement.)



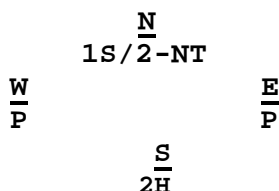
- B. An Opener’s Jump Re-Bid of 2-NT After Responder Bids at the 1-Level** = 18-19 HCP’s, an evenly balanced hand, absent primary support for Responder’s Major suit response, and the absence, in this example of 4-Spades, as well. It shows a hand slightly stronger than a strong opening NT.



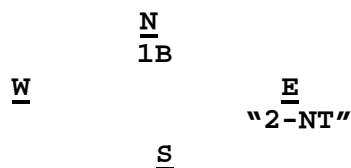
- C. An Opener’s Re-Bid of 2-NT After Previously Opening “2C”** = 23-24 HCP’s, an evenly balanced hand, slightly stronger than an opening bid of 2-NT.



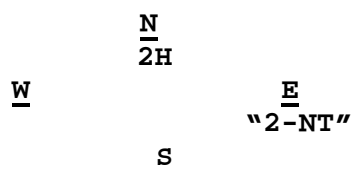
- D. An Opener’s Re-Bid of 2-NT After Responder Responds at the 2-Level** = Opening count with minimum opening values (A “Default” Bid), and lack of support for Responder’s suit. (One King Better than Minimum Values in a 2/1 “Game-Forcing” Bidding System)



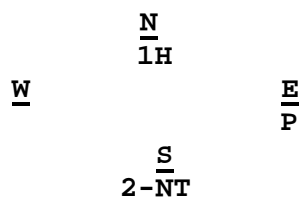
- E. **An Overcall of 2-NT In Either the Direct (2<sup>nd</sup>) Seat or in the Balancing (4<sup>th</sup>) Seat Following an Opponent's Opening Bid of One-of-a-Suit.** = An **"Unusual No-Trump"** bid. It shows 5-5 or longer in the two lower-un-bid suits, either very weak (5-10 HCP's) **or** very strong (16 (+) HCP's).



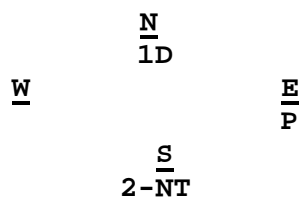
- F. **An Overcall of 2-NT In the Direct (2<sup>nd</sup>) Seat or in the Balancing (4<sup>th</sup>) Seat Following an Opponent's Opening Weak 2-Level Pre-Empt = 15-17 HCP's** equivalent to an strong opening 1-NT, balanced with no voids no singletons, or more than one doubleton, and at least one stopper in Opener's suit.



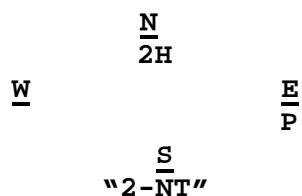
- G. **A Responder's Bid of 2-NT Following a Major Suit Opening Bid by Partner = 11-12 (or 13-15) HCP's - Invitational (or Game Values) (By Partnership Agreement), and with no support for Opener's Major suit. (If the Partnership is playing either "Jacoby 2-NT" or "Multi-Purpose 2-NT" Conventions, then this bid has specialized meaning other than what is herein presented.)**



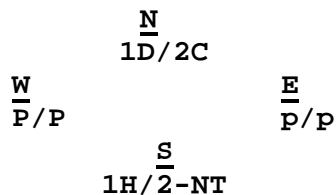
- H. **A Responder's Bid of 2-NT Following a Minor Suit Opening Bid by Partner = 11-12 HCP's, balanced with no 4-card Major, and no support for Opener's Minor suit.**



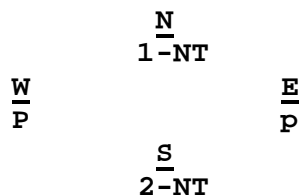
- I. **A Responder's Bid of "2-NT" Following Partner's Opening 2-Level Pre-Empt** = 15 or more HCP's. This bid is forcing, seeking a possible or assured game-level contract. The Opener, by Partnership agreement, ***must*** show either a "**Feature**" (An outside Ace or King), if present, ***or*** describe his/her hand further using either the "**Ogust**" or the "**Klinger Ogust**" Conventions.



- J. **A Responder's Bid of 2-NT Following the Bidding Having Reached the 2-Level** = 11-12 HCP's, Natural, and invitational to 3-NT and lack of support for Opener's suit(s).



- K. **A Responder's Bid of 2-NT Following Partner's 1-No-Trump Opening** = 9-10 HCP's (8 HCP's with a 5-card Minor suit), Invitational to 3-NT (12-13 HCP's in ACOL)



- L. **A Responder's Bid of 2-NT in Response to an Overcaller's Take-Out Double** = 10-12 HCP's This bid is natural and invitational to game with at least 1-stopper in Opener's bid suit.

