



Improve
Your Game

Support Double & Redouble

Mentor Mentee Game

September 10, 2019

Henry Meguid

ABTA Master Teacher & 2018 Teacher of The Year

SUPPORT DOUBLE & REDOUBLE

- What is it
- Who makes it
- What does it show
- What are the requirements
- How to rebid as opener
- How to respond to a support double or redouble

Responder



1 ♠



2 ♥

Opener

1 ♣

1

♠ AJ7

♥ A76

♦ T97

♣ KQT8

DBL

2

♠ AJ73

♥ A6

♦ T97

♣ KQT8

2 ♠

Responder



1 ♠



DBL

Opener

1 ♣

3

♠ AJ7

♥ A76

♦ T97

♣ KQT8

RDBL

4

♠ AJ73

♥ A6

♦ T97

♣ KQT8

2 ♠

SUPPORT DOUBLE OR REDOUBLE

Help differentiate between a **three** and **four**-card support for responder's suit after opener's RHO overcalls or double

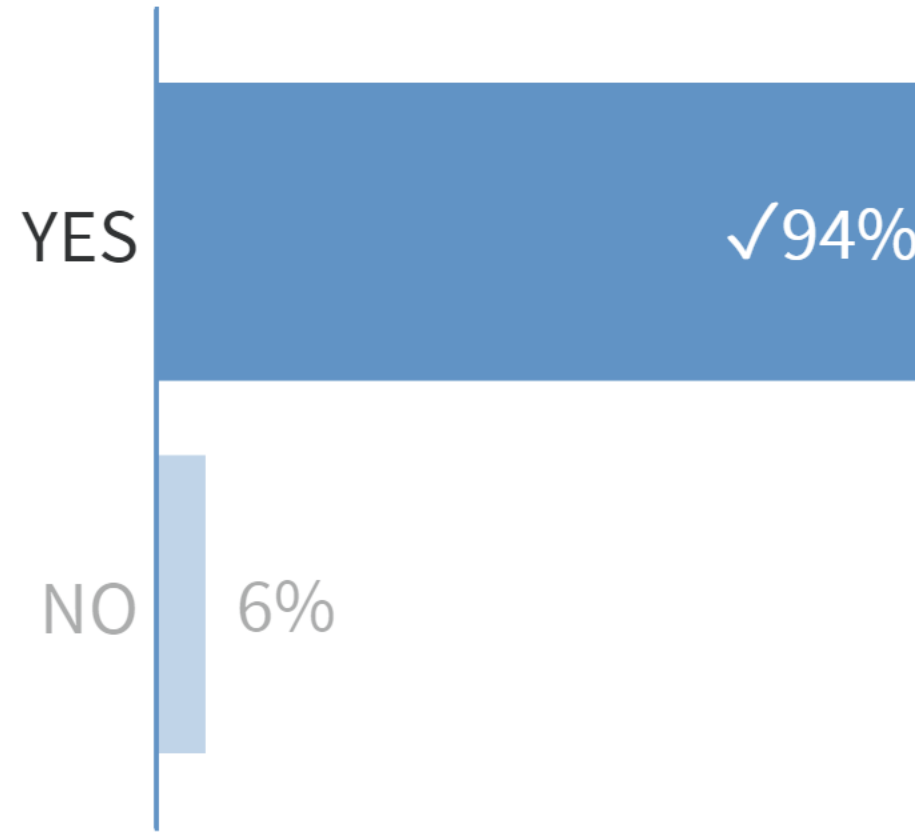
When do Support Doubles & Redoubles Apply?


- Apply only when responder has bid 1♥ or 1♠
- Through a 2♠ bid by opener's RHO
- The Support Redouble applies only after responder has bid 1M and RHO makes a takeout double

 **Poll locked.** Responses not accepted.

1) Is this a Support Double?

<u>Opener</u>	<u>Opponent</u>	<u>Responder</u>	<u>Opponent</u>
1♦	Pass	1♥	(2♦)
DBL			



 **Poll locked.** Responses not accepted.


2) Is this a Support Double?

<u>Opener</u>	<u>Opponent</u>	<u>Responder</u>	<u>Opponent</u>
1♦	(Pass)	1♥	(2♣)
DBL			

YES

✓100%

NO

 **Poll locked.** Responses not accepted.

3) Is this a Support Double?

<u>Opener</u>	<u>Opponent</u>	<u>Responder</u>	<u>Opponent</u>
1♦	(Pass)	1♠	(3♣)
DBL			

YES

NO

✓ 100%

 **Poll locked.** Responses not accepted.

4) Is this a Support Double

<u>Opener</u>	<u>Opponent</u>	<u>Responder</u>	<u>Opponent</u>
1♦	(1♥)	1♠	(2♦)
DBL			

YES

✓ 83%

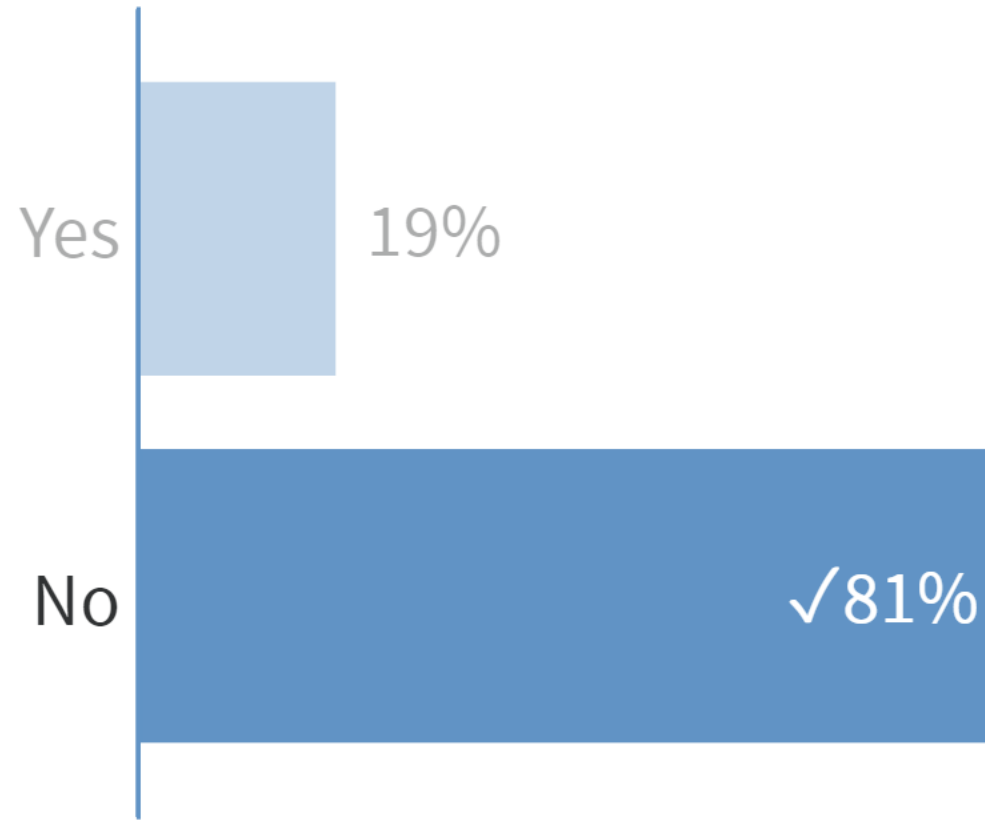
NO

17%

 **Poll locked.** Responses not accepted.

5) Is this a Support Double?

<u>Opener</u>	<u>Opponent</u>	<u>Responder</u>	<u>Opponent</u>
1♦	(1♠)	2♥	(2♠)
DBL			



Exercise 1

Responder

1 ♠



Opener

1 ♦

1

♠ K84

♥ 84

♦ AKJT62

♣ J8

RDBL

2

♠ K3

♥ 874

♦ AKJT62

♣ J8

2 ♦

3

♠ AJ76

♥ 98

♦ AKJT62

♣ 8

3 ♠

♠ K84

♥ 932

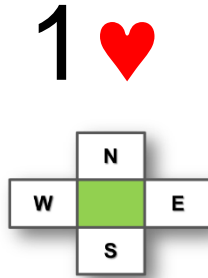
♦ KT6

♣ AK53

DBL

Opener

1 ♣



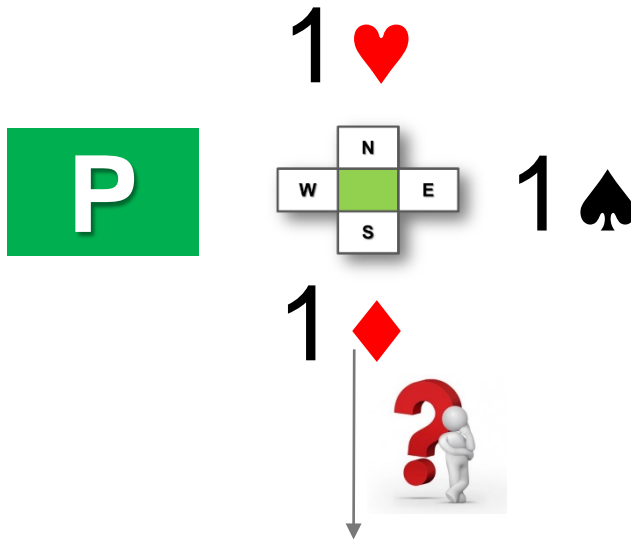
Responder

1 ♠

Shows a 5-card suit

Also shows a 3-card support

OPENER'S REBIDS



Pass = minimum hand, denies 3 or 4-card heart support

DBL = exactly 3 hearts, unlimited strength

INT = Maximum of 14 HCP, balanced with spade stoppers, only 2 hearts

2♣ = natural, both minors, <3 hearts

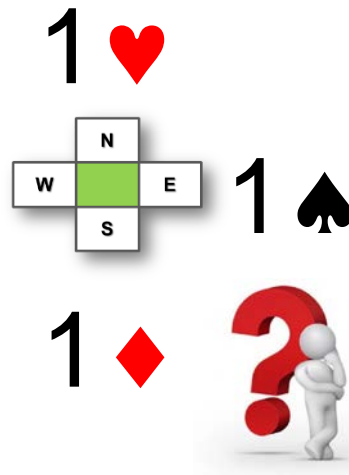
2♦ = 6+diamonds, <3 hearts

2♥ = guarantees 4 hearts, minimum hand

3♥ = 4 hearts, medium hand (Invitational)

4♥ = 4 hearts, maximum

Exercise 2



①

♠ 832

♥ A2

♦ AQ876

♣ QT3

2♦

②

♠ KJ3

♥ A43

♦ KJ765

♣ 32

DBL

③

♠ AQT

♥ 432

♦ KQJ7

♣ Q76

1NT

④

♠ A2

♥ KQJ

♦ AQJ76

♣ J32

DBL

RESPONDER REPLIES TO A SUPPORT DOUBLE OF REDOUBLE

NORTH	EAST	SOUTH	WEST
1♦	(Pass)	1♥	(1♠)
DBL	(Pass)	?	



1NT, 2♣, 2♦. OR 2♥ = NON-FORCING , UP TO 10 HCP

2NT, 3♦, OR 3♥ = INVITATIONAL

2♠ = GAME FORCING

Jump in new suit are forcing any suit.

Exercise 3

NORTH	EAST	SOUTH	WEST
1♦	(Pass)	1♥	(1♠)
DBL	(Pass)	?	

1

♠ 943

♥ J865

♦ K3

♣ A965

1NT

2

♠ AJ3

♥ Q9765

♦ Q3

♣ J83

2♥

3

♠ 97

♥ J1086

♦ KQ97

♣ AJ9

3♦

4

♠ 976

♥ A1075

♦ KJ3

♣ AQ3

2♠

THE SUPPORT DOUBLE AT THE TWO-LEVEL

NORTH	EAST	SOUTH	WEST
1♦	(Pass)	1♥	(2♣)
DBL	(Pass)	?	

2♦ = at least three diamonds, 4 hearts, non-forcing

2♥ = more than likely has only 4 hearts

2♠ = natural, 4-4 in the majors, should be forcing for one round

2NT, 3♦, 3♥ invitation to game

3♣ = game forcing cuebid

NORTH	EAST	SOUTH	WEST
1♦	(Pass)	1♥	(2♣)
DBL	(Pass)	?	

Exercise 4

1

♠ KJ32
♥ Q1076
♦ 76
♣ 976

2♥

2

♠ A3
♥ J832
♦ J103
♣ 8765

2♦

IS MAKING A SUPPORT DOUBLE OR REDOUBLE MANADATORY?

NORTH	EAST	SOUTH	WEST
1♦ ?	(Pass)	1♠	2♣

♠ 865

♥ K3

♦ AJ87

♣ KQ76

PASS

NORTH	EAST	SOUTH	WEST
1♦ ?	(Pass)	1♠	(INT)

♠ Q93

♥ A2

♦ AQ104

♣ 8765

PASS

Exercise 5

NORTH	EAST	SOUTH	WEST
1♦ ?	(Pass)	1♥	(2♠)

1

♠ K93

♥ AJ3

♦ KQ87

♣ 865

PASS

2

♠ 54

♥ KQ9

♦ AKJ104

♣ J65

DBL

3

♠ 4

♥ K103

♦ AJ86

♣ AK76

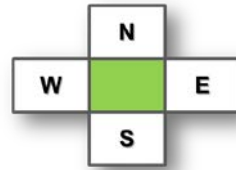
DBL

Exercise 6

♠KQT6
♥J87
♦AKQ
♣KJ7

Opener

1 ♣



Responder

1 ♥

1 ♠

2NT

*“Advanced players know the rules.
Experts know when to break the
rules.” - Anonymous*